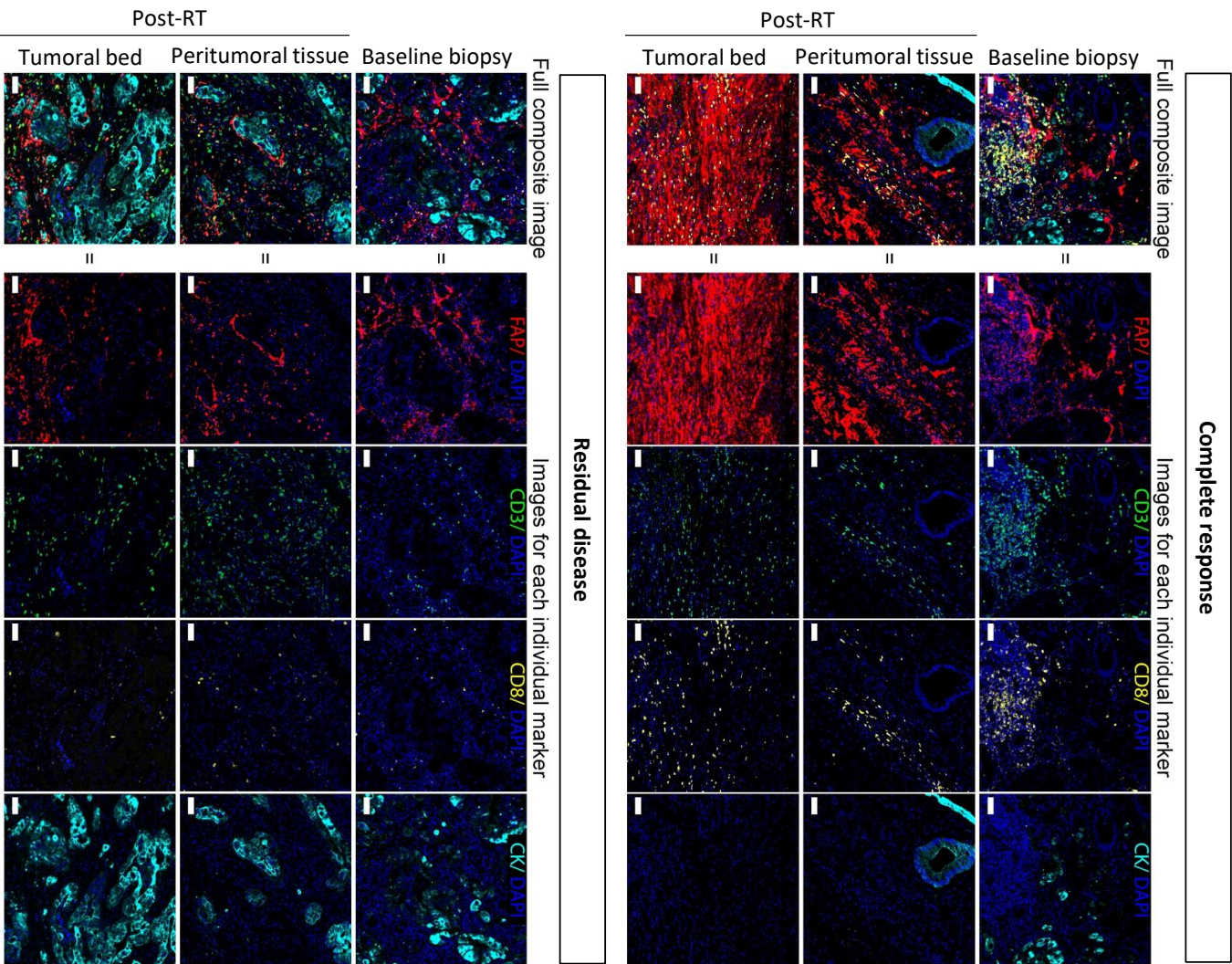
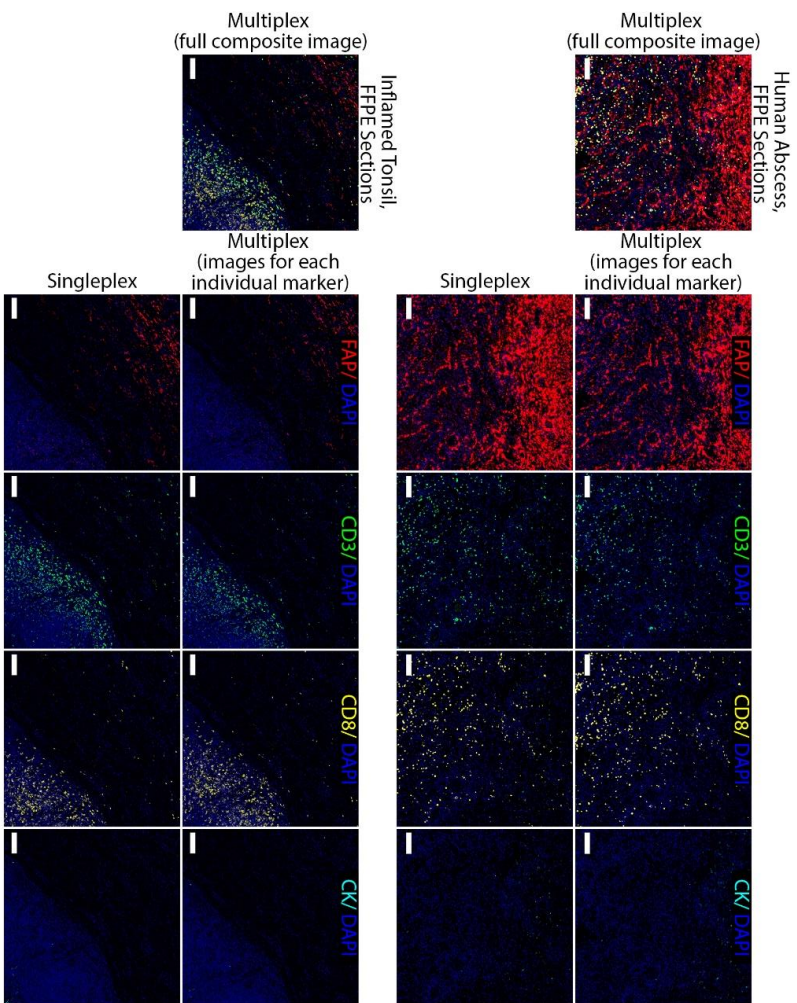


A



B



**Supplemental Figure 8. Radiotherapy enhances FAP expression and immune infiltration in colorectal carcinoma patients.** (A) Shown are representative images of the full composite (merged images, left) and individual marker images collected by multiplex immunofluorescence of patients with complete responses and residual disease of baseline biopsies or surgery tumor specimens post-CRT (n=12 patients). Post-CRT condition was divided into two subgroups: tumor bed and peritumoral tissue. Following markers were used: FAP, CD3, CD8 and cytokeratin (CK). The nuclei were counterstained with DAPI (scale bar 50  $\mu$ m). (B) Multiplex immunofluorescence validation was performed on human abscess and inflamed tonsils (left). Individual marker images are shown, where CD8, FAP, CD3 and CK were stained. The nuclei were counterstained with DAPI (scale bar 100  $\mu$ m).