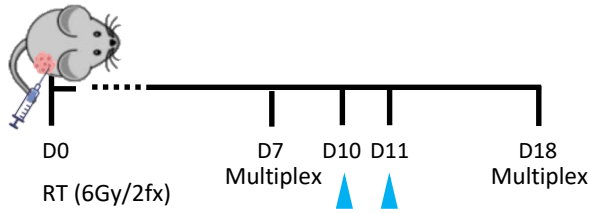
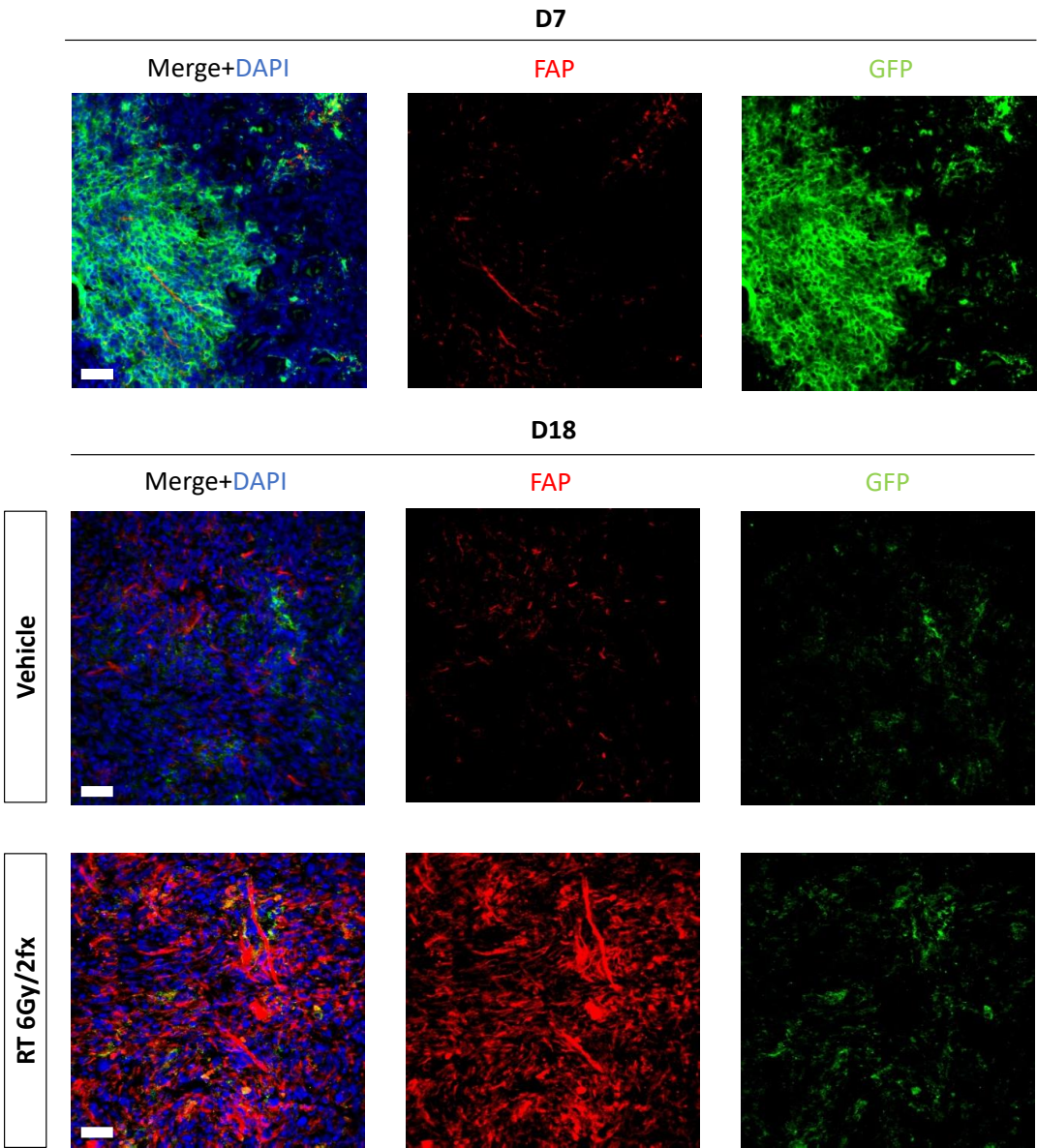


A

PT: 1.5·10⁵ TS/A cells + 5·10⁵ GFP⁺ CAF cells



B



Supplemental Figure 3. Irradiation induces endogenous FAP⁺ CAF recruitment into the tumors. (A) Scheme of TS/A+CAF-GFP⁺ tumor co-engraftment in mice. At day 10 the tumors of one group of mice were treated with hypofractionated therapy (RT, blue arrows). Tumors were excised at day 7 (pre-RT) or at day 18 (non-treated as “Vehicle” and irradiated as “RT”) (n=3 mice/group). (B) Immunofluorescence studies at day 7 (pre-RT) or day 18 (non-treated as “Vehicle” and irradiated as “RT”) staining DAPI (blue), CAF marker FAP (red) and GFP (green). The images show the representative image (scale bar 20 μm).