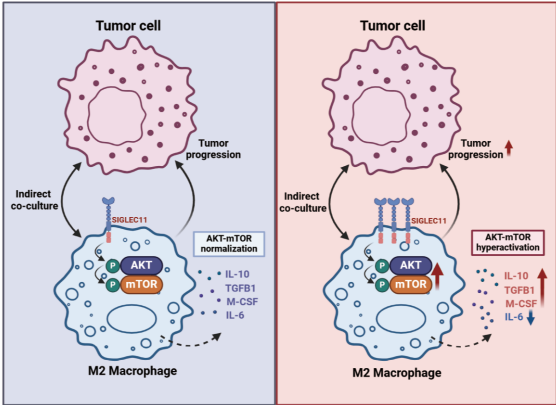


Siglec11 promotes M2 macrophage polarization through AKT-mTOR signaling and facilitates the progression of gastric cancer



Authors
Jingxin Yin, Yang Lu, Yihao Liu, Qimeng Shi, Minmin Shi, Zhenggang Zhu, Da Fu, Zhenqiang Wang, Chen Li

Correspondence
Chen Li, E-mail: leedocor@sina.com
Zhenqiang Wang, E-mail: wzq12326@rjh.com.cn
Da Fu, E-mail: fuda@shsmu.edu.cn

In Brief
SIGLEC11 is upregulated in TAMs, and overexpression of SIGLEC11 promotes not only the polarization of macrophages via AKT-mTOR signaling towards M2 macrophages but also the progression of gastric cancer.